



REINVENTING THE RURAL REALITY:

CULTIVATING HEALTH, IGNITING
COMMUNITIES



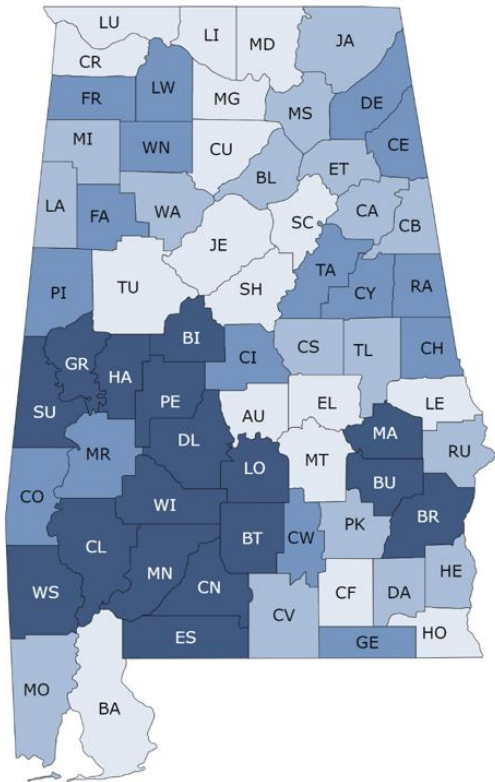
AUBURN

State of Our Health

County Health Rankings & Roadmaps

Building a Culture of Health, County by County

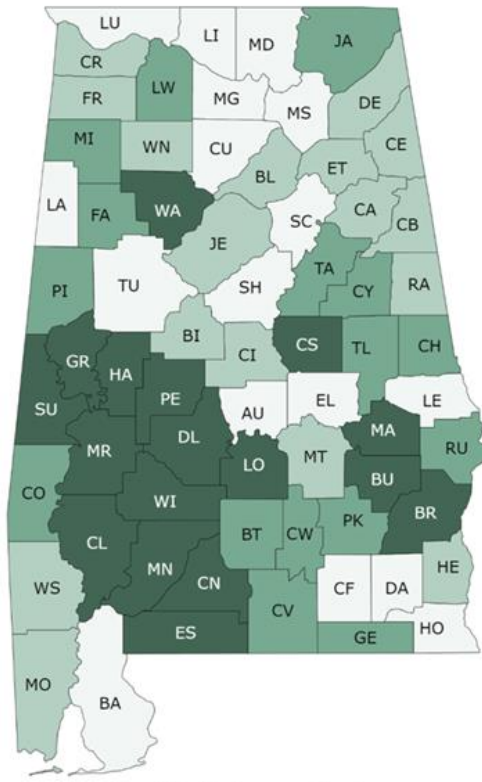
2023 Health Factors - Alabama



Health Factor Ranks



2023 Health Outcomes - Alabama

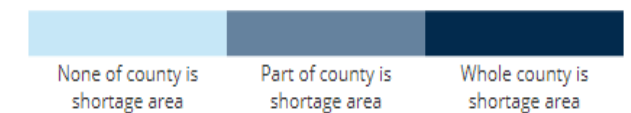
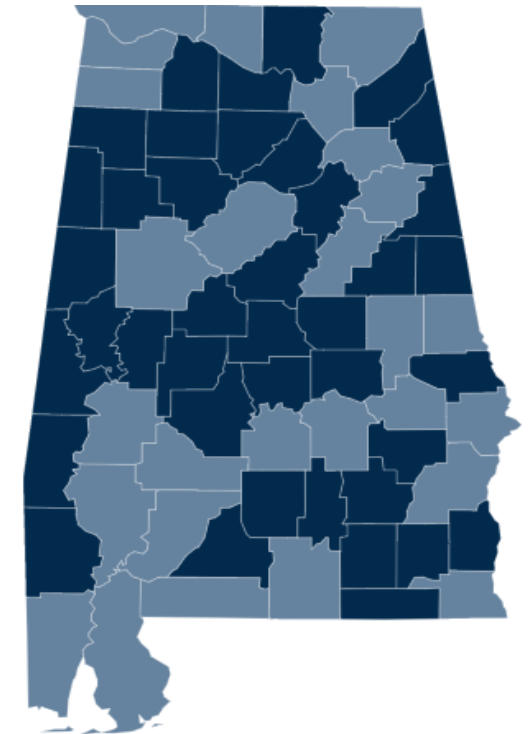


Health Outcome Ranks



Health Professional Shortage Areas

Source: www.data.hrsa.gov



Our Response: Auburn University Rural Health

MISSION

Improving the quality of lives of people throughout Alabama by increasing access to healthcare and providing personalized health and wellness services and education in underserved communities

VISION

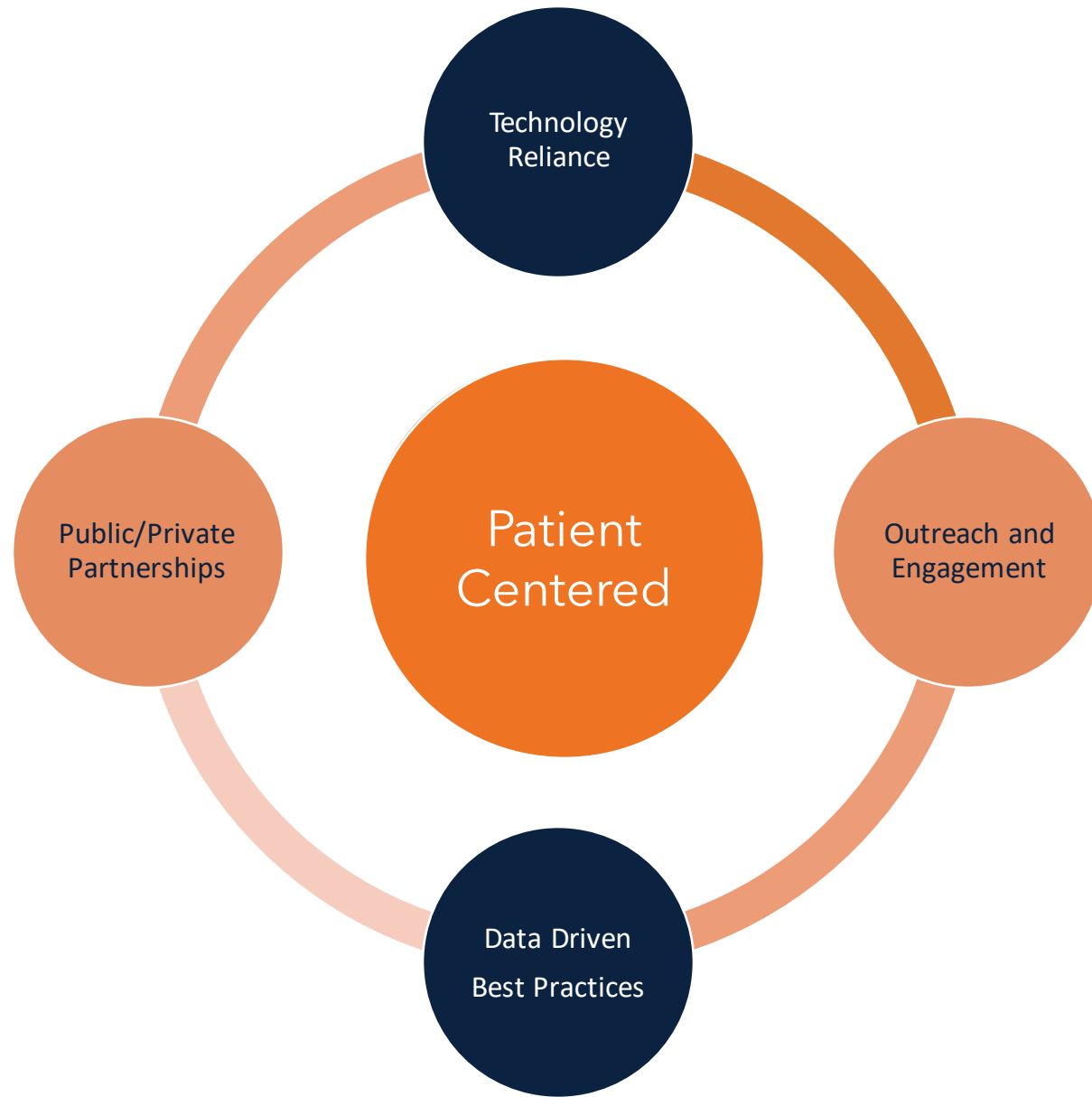
Alabamians will have equitable access to health care and improved health outcomes



Our Evolving Network



Our Model



Social Determinants of Health



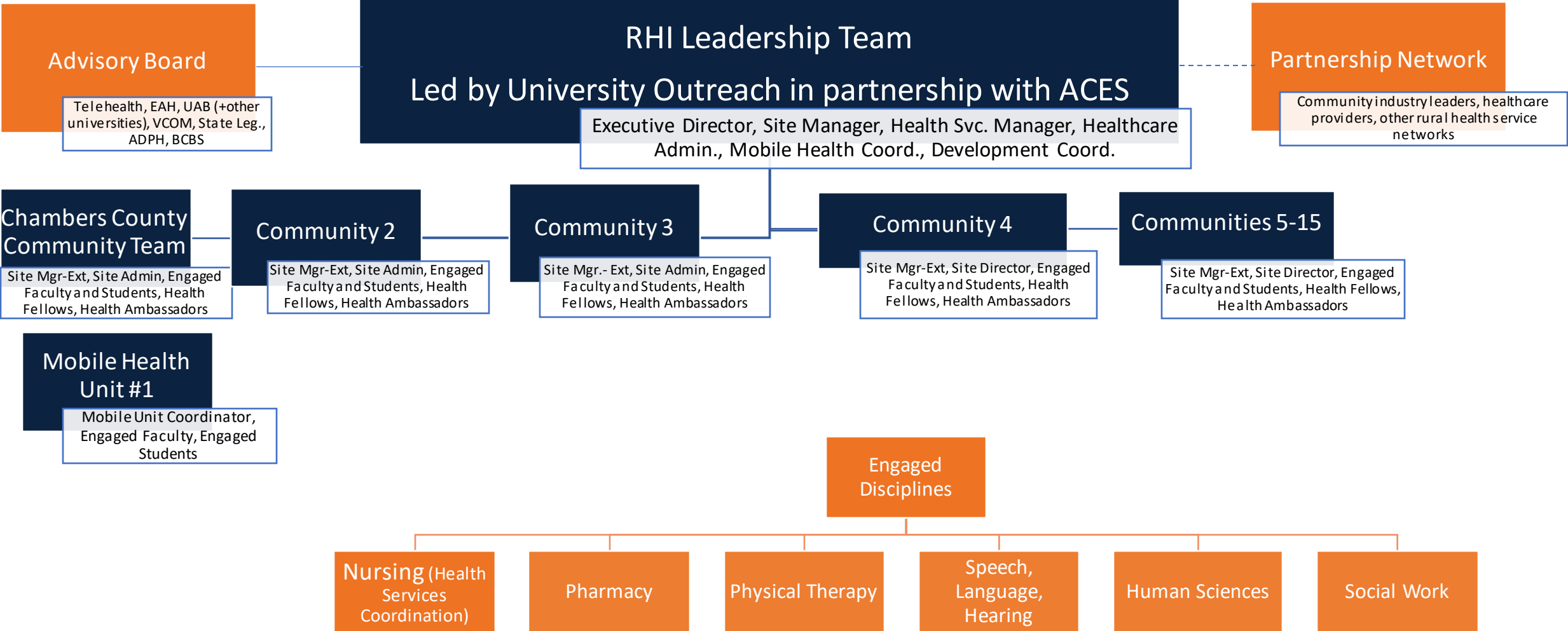
Figure 2

Social and Economic Factors Drive Health Outcomes

| Economic Stability | Neighborhood and Physical Environment | Education | Food | Community and Social Context | Health Care System |
|----------------------------------|---------------------------------------|---------------------------|---------------------------|------------------------------|---|
| Racism and Discrimination | | | | | |
| Employment | Housing | Literacy | Food security | Social integration | Health coverage |
| Income | Transportation | Language | Access to healthy options | Support systems | Provider availability |
| Expenses | Safety | Early childhood education | | Community engagement | Provider linguistic and cultural competency |
| Debt | Parks | Vocational training | | Stress | |
| Medical bills | Playgrounds | Higher education | | Exposure to violence/trauma | Quality of care |
| Support | Walkability | | | | |
| | Zip code / geography | | | | |

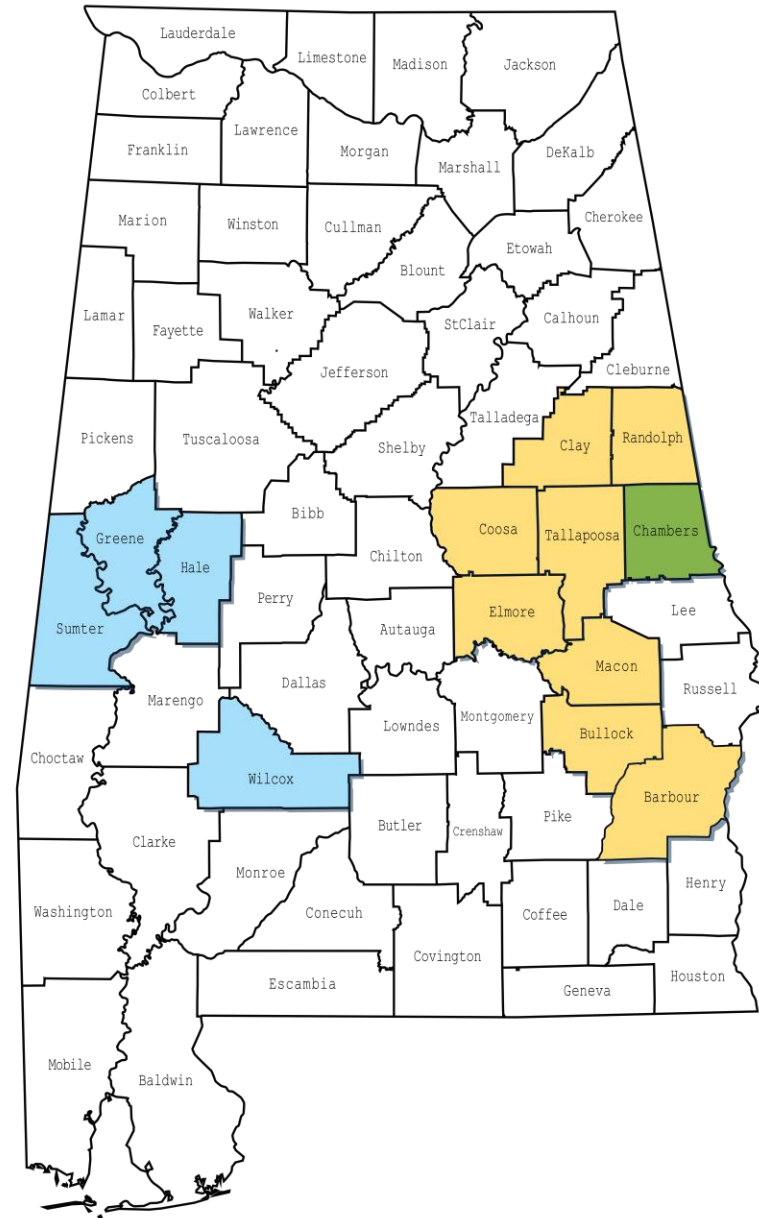
Health Outcomes: Mortality, Morbidity, Life Expectancy, Health Care Expenditures, Health Status, Functional Limitations

Our Expanding Network & Operational Structure



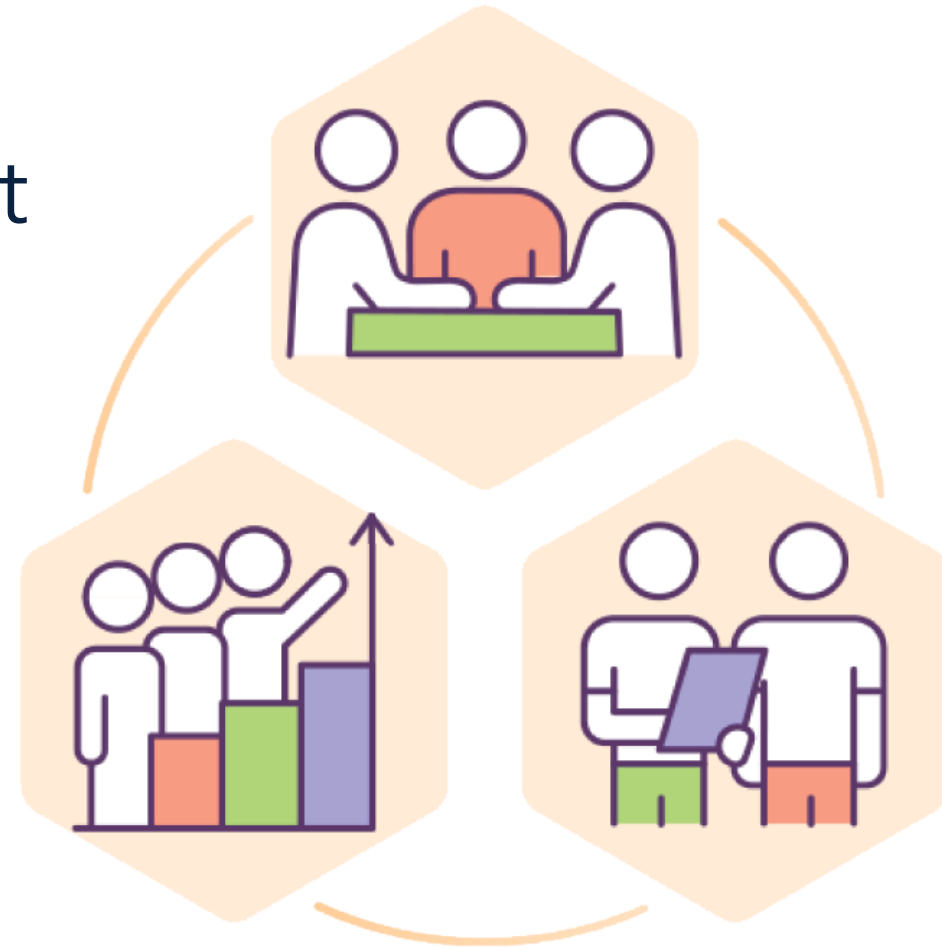
Locations

(in place and
Under consideration)



Priority:

Community Engagement
and Support



Our Evolving Community Engagement Roadmap

Meet with community leadership



Host community health forum



Identify community champion



Logistics: location, staffing



Ongoing demonstrations and engagement



Engage Community Health Ambassadors



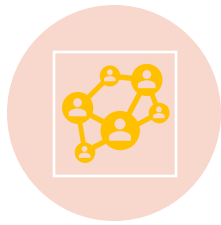
Community Health Forum - Guiding Questions



WHAT DO YOU SEE AS
LOCAL HEALTH AND
WELLNESS PRIORITIES?



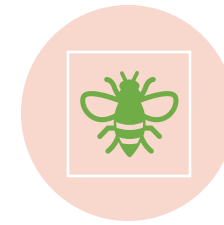
WHERE DO YOU
CURRENTLY RECEIVE
HEALTHCARE?



HOW CAN AUBURN
BETTER ENGAGE WITH
YOUR COMMUNITY?



WHAT BARRIERS DOES
YOUR COMMUNITY
FACE REGARDING
HEALTHCARE ACCESS?



WHAT ARE YOUR
COMMUNITY HEALTH
ASSETS?



HOW WOULD YOU
LIKE TO BE INVOLVED?

Resources and Services

Health and Wellness Programming

Speech and
Hearing

Maternal
wellness

Women's
health

Asthma
education

Vaccines and
testing

Mental health

Meal planning

Health
screenings
(IPE)

Heart health

Substance Use
Disorder
treatment

OnMed[®] Care Station

Features and Services



Measuring basic vitals such as height, weight and blood pressure



Thermal imaging for body temperature and to diagnose infection



Readings of respiration and blood oxygen saturation



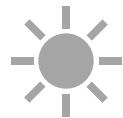
On-site robotic dispensing of hundreds of common prescriptions



Can securely transmit results to patient's primary care provider



Ability to provide paper prescriptions to preferred pharmacies, referrals



Ultraviolet surface and air sanitization





<https://youtu.be/TR6eNh3roWE>

Alabama Department of Finance – ARPA Funded Project

- Four Black Belt locations
- Limited access to health care
- Bottom 50% for health factors and health outcomes
- Local facility availability
- Strong community support
- Community utility support and facility maintenance

Funds provided for:

- Staffing (25 hrs./week)
- Project administration
- OnMed® Care Station lease
- Community engagement
- Vaccines and testing
- Health and wellness programming
- Project promotion

Telehealth Carts



Mental health

Auburn
University



**Substance Use
Disorder**

UAB-Beacon



Primary care

East Alabama
Health



**Community
distance
education**

GED, English
language,
Foreign
language



**Interagency
communication**

City-county
Professional
development



USDA –DLT Funded Project

Telehealth Cart Installation

- 10 East Alabama locations
- Limited access to health care
- Low score on health factors and health outcomes
- Extension office supported
- Strong community support
- Community utility support and facility maintenance

Service Delivery Partnerships

- East Alabama Health-Primary Care
- Auburn University Psych Services-Mental Health
- UAB Beacon-Substance Use Disorder Support

Funds provided for:

- Equipment purchasing
- Equipment installation
- Equipment training

Commitments



University Commitment



Health and Wellness Programming



2 years of full funding



Ongoing Community Engagement



Telehealth Installation Coordination



Ongoing technical support



Health and wellness materials

Community Support Needed



Designated Community Champion



Programming Publicity



Leadership Support



Dedicated Location



Increased financial support after two years

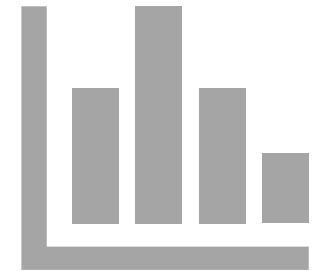
Assessment



Impact



Quality of services

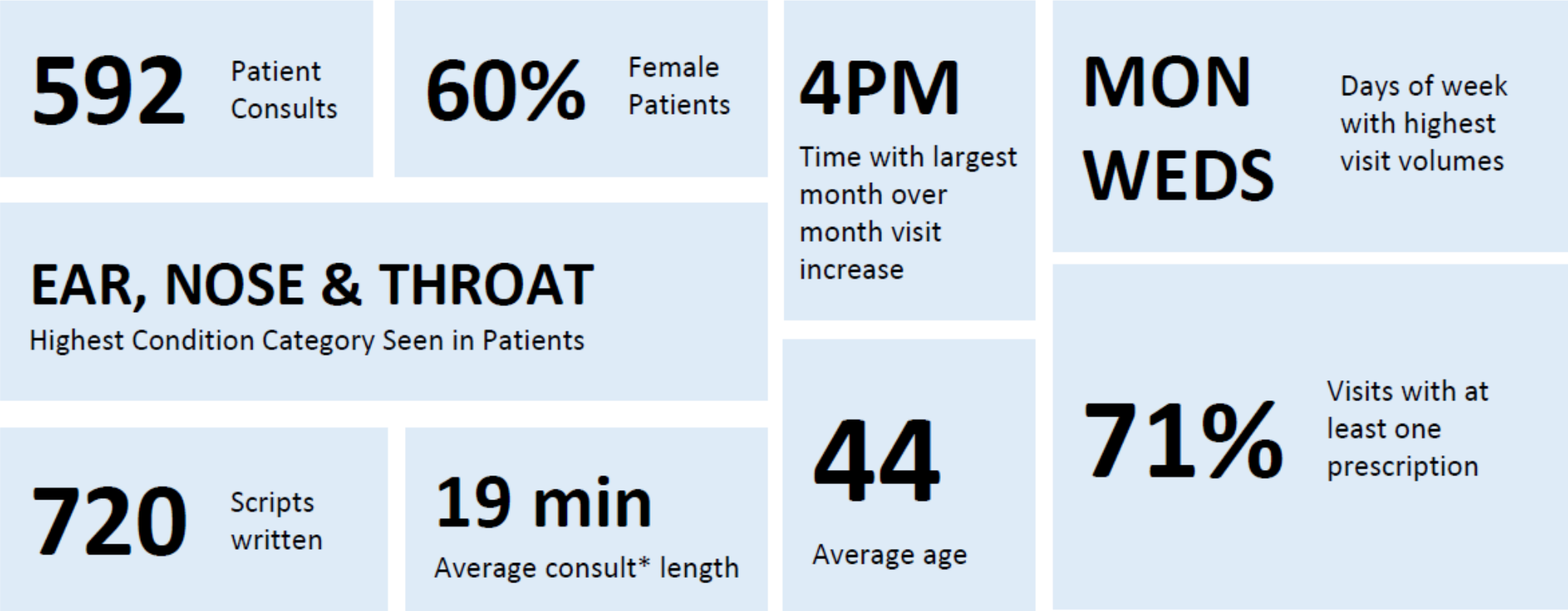


reporting

OnMed Annual Report

LaFayette Insights | Patient Activity

March through December 2023



*Consult refers to time spent with licensed, certified OnMed health care provider

CHAMBERS COUNTY



Community Health & Wellness Center

aub.ie/ruralhealth



COMMUNITY REPORT

August 2023

Offering on-demand health care and health and wellness programming to residents throughout the Chambers County area. All services are offered at no-cost to visitors.

UPCOMING EVENTS

Wednesdays, Circle of Care: Parenting That Works

August 12, 9:00-2:00, Health Fair, LaFayette High School

August 23, 9:00-2:00, Stroke Awareness Drop-in session

August 25, 12:00-5:00 Speech and Hearing Screening

DID YOU KNOW?

OnMed Care Station had 184 visits during the second quarter of operation. 67% of the patients were women. 46% of the patients who visit the care station are between the ages of 30-years and 64 years. Condition seen was ear, nose and throat followed by respiratory and dermatology issues. If you experience these issues or others, please visit us for support!

Auburn's College of Veterinary Medicine visited on August 1 to learn more about how they can contribute to our community.

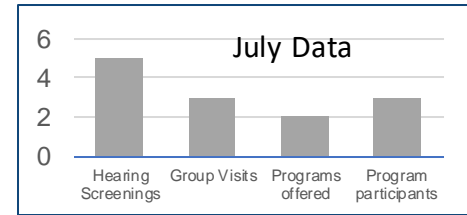
Health Tips for the New School Year

- #1 Build a sleep routine for school.
- #2 Practice healthy eating habits.
- #3 Reduce screen time and stay active.

Proudly sponsored by Auburn University, Alabama Cooperative Extension System, Chambers County and the City of LaFayette, and OnMed with significant funding from BlueCross of Alabama, BlueShield, Alfa Corporation and Alabama Department of Economic and Community Affairs (ADECA)

CENTER ACTIVITIES

OnMed Care Station Visits through July 2023: **286**



PLEASE VISIT US!

404 9th Avenue SW
LaFayette, AL

Monday – Friday 7AM – 8PM
Saturday – Sunday 1PM – 6PM

www.auburn.edu/outreach/ruralhealth
chambershealth@auburn.edu
(334) 459-0188



Sample Community Report



Impact Report



Chambers County Community Health and Wellness Center

100

attendees at the Chambers County Community Health and Wellness Center ribbon cutting on April 21, 2023

97% of participants indicated health needs were met very well or well

19 articles written about the Chambers County Community Health and Wellness Center

\$885,085

total funds being provided through Auburn University, Chambers County Commission, Alfa Corporation, BlueCross BlueShield of Alabama, the City of LaFayette and private donors

190 recorded total of university faculty, staff and students visited the center to understand services provided and consider ways their curricula could intersect with the services.

| Institution | Percentage |
|--------------------------------------|------------|
| Auburn University | 38% |
| Alabama State University | 22% |
| University of Alabama | 15% |
| University of North Alabama | 10% |
| University of West Alabama | 8% |
| University of Southern Alabama | 5% |
| University of Alabama at Birmingham | 3% |
| University of Alabama at Tuscaloosa | 2% |
| University of Alabama at Montgomery | 1% |
| University of Alabama at Huntsville | 1% |
| University of Alabama at Tallapoosa | 1% |
| University of Alabama at Phenix City | 1% |
| University of Alabama at Dothan | 1% |

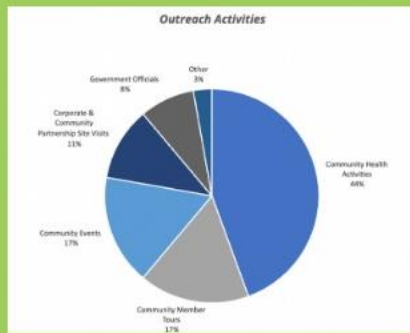
10

telehealth cart service delivery systems in East Alabama planned

887 individuals visited the station for demos and healthcare visits

560

individuals participated in the following activities at the center or in promoting the center



33 Community Health Ambassadors

Ambassadors promote the Center to the community

\$2,628,874

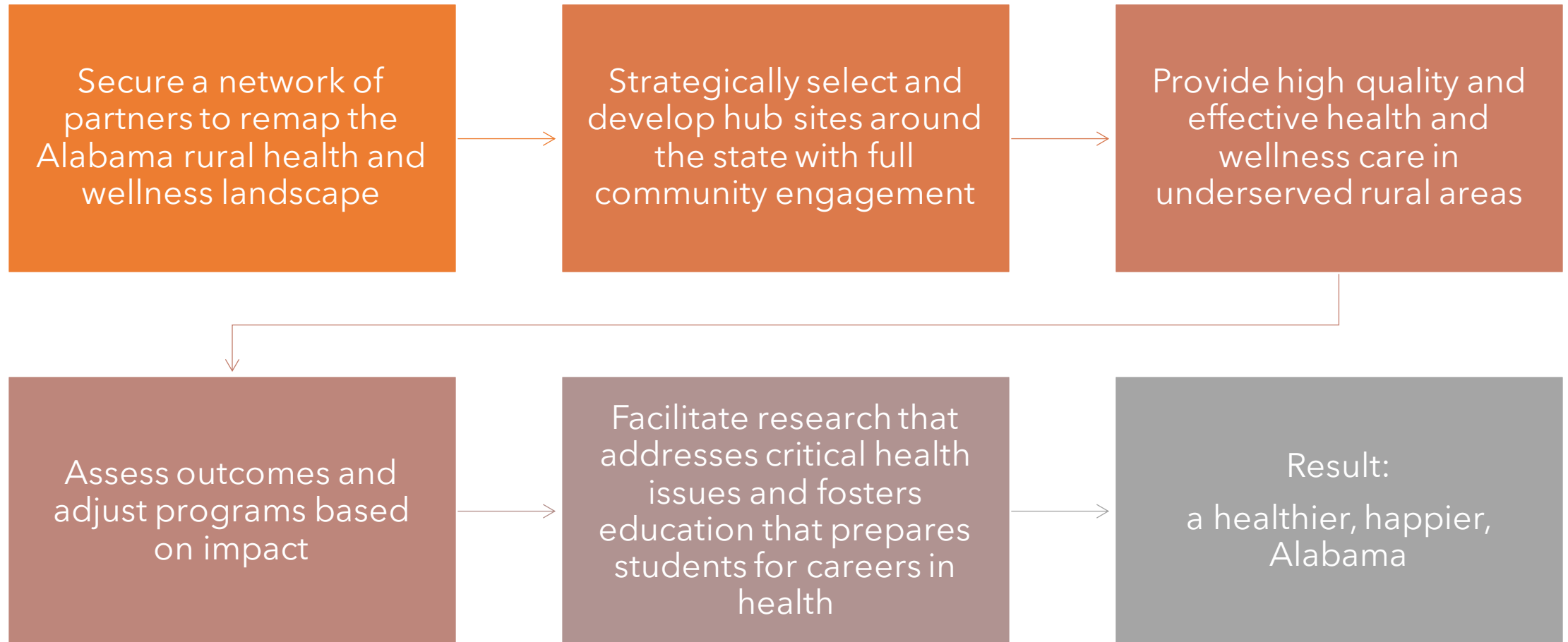
successfully secured funding, from sources including ARPA - Department of Finance and the USDA-Distance Learning Technology Fund

4

advanced care stations within the Black Belt region planned

94% of participants indicated they were somewhat likely or extremely likely to recommend the service to a friend

Our Path Forward



Partners and Funders

AUBURN UNIVERSITY RURAL HEALTH INITIATIVE





CONTACT US

Linda Gibson-Young, Ph.D., ARNP,
AE-C, MBA, FAANP

College of Nursing, Professor,
Outreach Coordinator,
gibsolm@auburn.edu

Hollie C. Cost, Ph. D.
Assistant Vice President,
University Outreach and Public
Service

Hollie.Cost@auburn.edu

